

Notes: Notes of the 35th Meeting of the Maules Creek Coal Community Consultative Committee
Held at the Boggabri Golf Club

Wednesday 3 November 2021

Members Present: Blair Meyers (BM) – WHC, Cr Robert Kneale (RK) – Narrabri Shire Council, Darren Swain (DS) – WHC, Emma Bulkeley (EB) – WHC, Libby Laird (LL) – Maules Creek Community Representative, Lyndell Crowley (LC) – Community Representative, Robyn Grover (RG) – Community Representative,

Apologies: Jack Warnock (JW) – Community Representative, Simone Moodie (SMo) – Community Aboriginal Representative, Steve Eather (SE) – Community Representative

Independent Chair: David Ross (DR)

Independent Secretary: Debbie Corlet (DC)

Agenda Items	Who to Present
1. Apologies	DR
2. Declaration of pecuniary or other interests	DR
3. Confirmation of the Minutes of the previous meeting – Wednesday 27 October 2021	DR
4. Business arising from the previous minutes – Action List Distributed	DR
5. Company Report and Overview of Mine	WHC
6. General Business	DR
7. Next Meeting – Wednesday 23 February 2022	ALL

Agenda Item	Discussion	Action/By Whom
1.	<p>Welcome and Apologies – Jack Warnock, Simone Moodie and Steve Eather. DR welcomed everyone to the final CCC meeting of the year. DR briefly introduced Blair to the CCC.</p> <p>BM – I am the Statutory Mining Engineer Manager and also Acting as Health, Safety, Environment & Community Manager.</p> <p>DR – Explained that Ross Wilson has retired and wanted to thank Ross for all his time and commitment to the CCC. DR also advised that David Paull has also resigned from the CCC. DR thanked him for his interest in the CCC.</p>	
2.	<p>Declaration of pecuniary or other interests – DR is paid a fee as chair as is DC for typing the minutes. LL: noted that SMO's declaration of pecuniary interests (i.e. she declared that she ran a business as a contractor with WHC) was not minuted. I was not aware.</p>	ACTION 1 – DR to clarify re SMO interests
3.	<p>Confirmation of the Minutes of the previous meeting – The CCC endorsed the Minutes from the previous meeting.</p>	
4.	<p>Business Arising from the previous minutes</p> <p>DR – Thanks to DS and EB for providing responses actions that came out of the last meeting. All actions are completed.</p>	
5.	<p>Company Reports and Overview of Activities</p> <p>Company Report & Overview of Activities – FY22 target production ~ 12.1 – 12.5 Mtpa ROM (Run of Mine) coal. FY22 Q1 delivered 2.9 Mt ROM. September 2021 TRIFR (Recordable injuries per million exposure hours) 5.8.</p> <p>Health and Safety – COVID-19 Management – Continued monitoring of compliance with current COVID-19 preventative measures. Business continuation plan in light of COVID border restrictions. COVID vaccination incentive scheme in place.</p> <p>Continuous Improvement Projects – New road rules to reduce heavy vehicle and light vehicle interaction. All light vehicles give way to heavy vehicles now. BM outlined the Critical Control Monitoring plan, which identifies the contingencies for, if someone gets sick for example, how would the business continue, who can do that person's role.</p> <p>Employment – Continued focus on local, indigenous, and female employment with ongoing training programs undertaken. 513 MCC people are employed on site. 11.5% of the MCC workforce are women. 15.2% of total workforce are women. 12.5% Indigenous employment.</p>	

EB: Tree planting progress finished for the year 320,000 trees

LL: Where are the trees planted?

EB: Teston, Vellyama- I am not sure of all the names. It is in the map in Biodiversity Management Plan.

Threatened Flora

- Planted an additional 85 Pomaderris seedlings in August / September. Total of 119 Pomaderris has been planted at 5 sites in the Maules Offset from seed collected from the Mine site.

Upcoming Works

- Quarterly Pest Animal Monitoring and Control Program in Dec 2021. Continued Seasonal Weed Control Programs. Complete Spring Flora and Annual Fauna Monitoring. Quarterly Threatened Flora Inspections and Programs. Complete Annual Fuel Load Monitoring and Bushfire Hazard Assessment. Derelict Infrastructure Clean Up and Removal.

LL: Will the Warriadohl house be removed?

DS: Not the historic hut on Warriadohl it won't be removed. The house may be removed for other reasons.

Community – 6 complaints received including driver behaviour, inappropriate use of UHF channel and 4 re blasting. Donations for July to September 2021 were over \$93,000. Highlights – over \$9,000 to Carroll Community Bus Association, \$5,000 to Royal Far West Children's Health and \$5,000 to Gunnedah Public School Kids Kitchen.

LC – Looking at the donations graph – only 2% is in Boggabri and nearly 50% goes to Gunnedah. Are they more proactive about asking for money?

DS – Yes - We gave the Narrabri Council \$800,000 as part of the Project Approval but out of our control once it goes to Council.

LC – The Progress Association no longer exists and the Business Chamber is only for those in business and with an ABN. There is no mechanism for the community to have a say or be involved in these conversations.

DS – It's not one for WHC to solve. We understand there may be a disconnect and we try and put it in the papers to get the information regarding funding further afield. We are happy to come and speak to another group if that's what it takes. We can only assess the requests that come in.

AHS Project Works – The AHS System has returned to operation after a major software release. There have been several teething issues with the new hardware and software and the system has shown potential. Maules Creek have been able to successfully operate the Autonomous trucks for more hours per day than

their manned counterparts, however, achieving the equivalent productivity (tonnes or BCM/hr moved) compared to a manned truck is proving to be a challenge. Upcoming features to unlock better ability / productivity of the trucks – the autonomous trucks are stopping too frequently due to the obstacle detection system being too sensitive.

BM – New technology for Hitachi resulting in 90% productivity and 115% utilisation, compared to usual pauses in workloads.

Report given to CCC members – Stakeholder Engagement and community investment strategy 2021 – 2023

DS – WHC have formed a Community Investment Review Committee made up of a councillor and community representative from each of Narrabri, Gunnedah and hopefully, Liverpool Plains Shire Councils. Committee will then review all those applications that come in across the sites. Next round of applications can be lodged between 1st and 31st January. If you know people who might be interested, get them to go to the website. There is \$200,000 in this bucket and \$50,000 each quarter. If it doesn't get spent, it will carry over to the next quarter.

DR – So, the strategy is about implementing a formal structure for councillors and community reps to review applications over time on issues like education, health, indigenous and health rather than previous ad hoc approach?

DS – Yes. It was more ad hoc previously and gives the community more control about where the money gets spent and the community will have more visibility.

LL: Who decides who gets the money from this new strategy? How were the people chosen?
Who are the decisionmakers?

We asked prominent people in the community to be on the committee like the current Rotary Chairman. So, people who are well connected in the community.

LL – To be clear, this is not VPA money. It is not part of the Project Approval. I've never understood all these buckets you talk about. Now Lindy has raised this concern, it is clearer. How will the community operate? Do you have guidelines like for the VPA and the CCC? Will there be transparency? Are you having an Independent Chair and not the same people?

DS – We haven't got to that level of detail as yet. There are changes with Councillors to keep in mind, so maybe a 2-year term. The first meeting of the Committee is where we'll sort out these issues.

DR observed that the model being used by WHC is commonly used for these matters.

<p>This instigated a lengthy discussion on how MCCM funding is allocated within Boggabri, Maules Creek and the surrounds as well as the level of transparency with respect to how the money in the VPA is disseminated. There were concerns raised about how VPA decisions are made and a belief that Boggabri misses out. DS observed that money from the VPA (voluntary planning agreement) had been allocated by Narrabri Council to Narrabri Airport and bridge; some got re-allocated, and some came to Maules which was \$275,000 and some to Boggabri. However, WHC has no role in how NSC spends the money.</p> <p>LL: To DR: Would it be appropriate for the council to be asked to provide an update on the VPA money so when Lindy for example is asked by people how much money is available in the Boggabri VPA, she actually has the information.</p> <p>RK: You can wade through years of Council Minutes and find the money has been allocated correctly. Sometimes money gets moved as priorities change. But I agree, Boggabri doesn't get as much funding. The decisions come to council and we vote and 5 votes always beats 4. Now with a new council, who knows?</p> <p>DR – So an action on me to write to council requesting an update for the CCC as to the VPA balance and expenditure? I won't do this until after the council elections because things will be up in the air. Happy to write a letter and approach Council, post-election, seeking clarity on VPA money and how it has been spent to date for Maules Creek VPA and how much is left, and anticipated forecasts / ear marked projects to exhaust the funding etc.</p> <p>Approvals Update</p> <p><u>Modification 8 – Tyre / Mobile Crushing</u> – The Modification was placed on public exhibition from 8 to 21 October 2021. A total of 20 submissions were received, comprising 3 from public authorities, 4 from organisations and 13 from the public. A key recommendation in the submissions from public authorities is to impose conditions that require WHC to regularly review local feasible recycling opportunities. A determination from DPIE is expected in November 2021.</p> <p>LL – Re Modification 8. It's important as the community are really concerned not only about the tyres but the rock crushing as well. I don't remember the rock crushing mentioned at the last ccc. It's a real concern, the noise and dust impacts.</p> <p><u>Modification 9 – BOS and ETL</u> – The Modification would comprise the following: Modification of the MCCM biodiversity offset strategy to align the offset areas required under PA 10_0138 with the offset areas proposed to meet the requirements of the EPBC Act approval (EPBC 2010/5566). Construction of an electricity</p>	<p>ACTION 4 – DR to write to Council re VPA</p> <p>ACTION 5 – WHC to provide a slide on VPA at next CCC meeting</p> <p>ACTION 6 – EB to notify DR when the Modification goes on Exhibition</p>
---	--

	<p>transmission line, ETL (including poles and overhead wires) with a 20-metre corridor to connect the Roma Bore pump to an existing 11 kilovolt (kV) powerline which runs approximately 700 m to the west of the Roma. Roma Bore to change from “gen set” to electric pump. No changes to the coal mining and processing rate, mining method, mine life or rail movements are proposed as part of the Modification. It is anticipated that the Modification application and Modification Report will be lodged in 2021 and subsequently placed on public exhibition for comment.</p> <p>Enforceable Undertaking Update – Consultation with relevant regulators about the updated Water Monitoring Plan. Development of updated stream health monitoring program complete. Site allocation for new stream and soil moisture monitoring stations complete. Construction of four highwall dams is on track. Decommissioning plans for dams along the rail corridor is complete – requires approval before work can commence.</p> <p>LL – The pipes that you removed from the property near Back Creek? When did you do that? EB – Probably in the last 2 or 3 months. This were removed from the Marlow Downs property. LL – Where does this water end up? EB - Pumped into the clean water diversion dams and will enter Back Creek during rain event. Can’t be passively released, needs to be pumped. We haven’t released water yet. LL: When do you release it? EB: When it rains.</p>	<p>ACTION 7 – EB to report back on when the pipes were removed</p>
6.	<p>General Business</p> <p>DR – Wanted to thank RK for his time over the years as it has been greatly appreciated and wishes him all the best for his next chapter.</p> <p>LL – Read a statement – “I would like to have it noted in the Minutes, that the local concerned Maules Creek community members and the concerned Traditional owners – the Gomeroi, strongly object to the past burial and any ongoing burial of waste tyres (ORT) by Idemitsu Coal, in the Leard State Forest on Gomeroi Country’.</p> <p><i>I would like to have it noted in the minutes, that the local concerned Maules Creek community members and the concerned Traditional owners - the Gomeroi, strongly object to the past burial and any ongoing burial of Waste tyres (OTR) by the Maules Creek Mine, in the Leard State Forest on Gomeroi Country.’</i></p> <p>LL – Would like a map of land ownership and to know what land is owned by Red Chief on the mine site please.</p> <p>DR – Tabled a letter by The Country Women’s Association of NSW in relation to tree clearing. The letter requests that the mine does not engage in any forest clearing or tree clearing in 2022. It observes how representatives at the recent</p>	<p>ACTION 8 – WHC to report what land is owned by Red Chief.</p>

	<p>COP 26 meeting in Glasgow had signed a declaration on ceasing deforestation. Maules Creek CWA members believe that the place our generation leaves behind must be a better and more environmentally resilient place. We need to work towards creating a safer, stabler future for our people and for the planet on which we depend.</p> <p>LL – With the recent governments meeting in Glasgow, it's a worldwide issue, not just here in Australia. We need to be leaders and offsetting is not the solution. We have to change our ways and move from fossil fuels, and we'd like you (WHC) to be a part of this as well.</p> <p>DR – At the Tarrawonga CCC, we had a great presentation on blasting after a number of complaints. Is this something that would interest the Maules CCC which everyone agreed it would.</p> <p>DR – Thanked every member for their attendance and contributions throughout a difficult year.</p>	ACTION 9 – WHC to organise a guest presenter on blasting
7.	Next meeting date to be agreed – Next meeting Wednesday 23 February 2022 at 2:00 pm. At this meeting, I'll provide dates for the rest of 2022.	

Meeting Closed: 3:58 pm

Appendix 1: Actions

Page No	Action No	Description	Date Raised
2	1	DR to clarify re SMO interests	3 November 2021
3	2	DR to enquire with EPA re status of Namoi quarterly air quality reports	3 November 2021
3	3	WHC to add in the link from the Annual Review of property names	3 November 2021
5	4	DR to write to Council re VPA	3 November 2021
5	5	WHC to provide a slide on VPA at next CCC meeting	3 November 2021
5	6	EB to notify DR when the Modification goes on Exhibition	3 November 2021
6	7	EB to report back on when the pipes were removed	3 November 2021
6	8	WHC to report what land is owned by Red Chief.	3 November 2021
7	9	WHC to organise a guest presenter on blasting	3 November 2021

Appendix 2: Briefing Notes from WHC



Briefing Note

To: Maules Creek Coal Mine CCC Members

From: Maules Creek Coal Mine (MCC)

Date: 24 September 2021

Reference: Responses to questions MCC CCC August 2021 Meeting

Subject: Responses to MCC CCC Actions and Questions

Action	Response
Action 1. Flip Standing Water Level graph in presentation	Noted
Action 2. Biodiversity Modification Update	Biodiversity Modification Update to be provided when available.
Action 3. How many tyres were buried in 2018 and how many tonnes?	229 end of life tyres were buried in October 2018.
Action 4. Where were the tyres buried?	These end of life tyres were buried beneath a waste emplacement area.
Action 5. WHC to provide updates at each meeting on actions	Noted Enforceable Undertaking actions resulting from NRAR Court case progression to be presented at each meeting.
Action 6. WHC to provide information about the analogue sites as well as provide mapping	See Section 6.17.1 Vegetation and Habitat Monitoring in the Biodiversity Management Plan starting on page 160. https://whitehavencoal.com.au/our-business/our-assets/maules-creek-mine/ Then click <ol style="list-style-type: none">1. Environmental Management, Monitoring & Compliance2. Environmental Management Plans, Strategies and Programs3. MCC-Biodiversity Management Plan
Action 7. WHC to provide link to The Annual Review	https://whitehavencoal.com.au/our-business/our-assets/maules-creek-mine/ Then click <ol style="list-style-type: none">1. Environmental Management, Monitoring & Compliance2. Annual Reviews3. MCC-Annual Review 2020
Action 8. WHC to send hard copies (Annual Review) to Jack and Libby	Sent 24 th September 2021

Appendix 3: Questions by Libby Laird

Questions for MCCM CCC 3rd Nov. 2021

1. Clarifying the issues from Mod 8: Can Whitehaven be asked to provide a map showing land ownership. There is no indication of which land is owned by Red Chief.
2. Please outline specific details of MCC's 'Proactive Noise Management System' as specified in relation to Mod. 8 - to assure the local community that there will not be any increase in noise from the existing noise limits as stated in the Project Approval, if the Mod 8 is approved.
3. Has MCC given EPA all recorded co-ordinates (easting, northing and elevation) of each disposal location of the illegally buried 229 tyres in 2018, along with all individual Tyre make, size and identification of those tyres?
4. Where is the onsite Environmental Impact Assessment for the Burial of ORT at MCCM? Not reports relied upon from other sources, but specific MCCM burial sites that could impact groundwater or rehabilitation.

Maules Creek Coal Mine Community Consultative Committee Meeting #35

Environmental Monitoring Report For the Q3 period, July – September 2021

Attended Noise Monitoring

Attended noise monitoring was undertaken at six locations during July, August and September 2021 by an independent acoustic consultant. The measured noise level (LAeq 15 minute) attributed to Maules Creek Coal Mine (MCCM) and applicable criteria for each location are shown in the tables below.

LAeq, 15minute GENERATED BY MCCM AGAINST OPERATIONAL NIGHT NOISE CRITERIA – JULY TO SEPTEMBER 2021.

Table 1 - July Noise Monitoring

Location	Start Date and Time	Wind Speed m/s	Rainfall mm	Criterion dB	Criterion Applies ¹	MCCP LAeq dB ²	Exceedance dB ³
NM1	19/07/2021 22:30	0.2	0.0	35	Yes	26	Nil
NM2	19/07/2021 23:30	0.2	0.0	39	Yes	IA	Nil
NM3	19/07/2021 22:00	0.1	0.0	35	Yes	IA	Nil
NM4	19/07/2021 23:00	0.2	0.0	35	Yes	IA	Nil
NM5	19/07/2021 22:00	0.1	0.0	35	Yes	23	Nil
NM6	20/07/2021 00:00	0.4	0.0	35	Yes	IA	Nil

Table 2 – August Noise Monitoring

Location	Start Date and Time	Wind Speed m/s	Rainfall mm	Criterion dB	Criterion Applies ¹	MCCP LAeq dB ²	Exceedance dB ³
NM1	03/08/2021 22:30	0.1	0.0	35	Yes	27	Nil
NM2	03/08/2021 23:30	2.1	0.0	39	Yes	IA	Nil
NM3	03/08/2021 23:45	2.8	0.0	35	Yes	IA	Nil
NM4	03/08/2021 23:00	0.2	0.0	35	Yes	IA	Nil
NM5	03/08/2021 22:00	0.2	0.0	35	Yes	25	Nil
NM6	03/08/2021 23:56	2.4	0.0	35	Yes	IA	Nil

Table 3 - September Noise Monitoring

Location	Start Date and Time	Wind Speed m/s	Rainfall mm	Criterion dB	Criterion Applies ¹	MCCP LAeq dB ²	Exceedance dB ³
NM1	08/09/2021 22:30	0.2	0.0	35	Yes	IA	Nil
NM2	08/09/2021 23:30	0.7	0.0	39	Yes	IA	Nil
NM3	08/09/2021 23:39	0.4	0.0	35	Yes	IA	Nil
NM4	08/09/2021 23:00	0.2	0.0	35	Yes	IA	Nil
NM5	08/09/2021 22:00	0.5	0.0	35	Yes	IA	Nil
NM6	08/09/2021 23:57	0.5	0.0	35	Yes	IA	Nil

(1). Noise emission limits do not apply during periods of rainfall or winds greater than 3 metres per second (at a height of 10 metres);
(2). Estimated or measured LAeq 15minute attributed to MCCM;
(3). NA in exceedance column means criterion is not applicable, either due to atmospheric conditions outside those specified in project Approval or due to property acquisition by MCC; and
(4). Indicates the application of a 2dB low frequency modifying factor.
IA/NM – Inaudible NM – Not measurable

During Q3 no measurements satisfied the conditions for further assessment when reviewed for the applicability of low frequency modification factors in accordance with the EPA's Noise Policy for Industry.

Maules Creek Coal (MCC) EPL 20221 also has a '1 Minute - Night' criteria (LA1) that applies from 10pm to 7am Monday to Saturday & 10pm to 8am Sundays and Public Holidays. The results for the LA1 monitoring are shown below. The results show that mine operations did not exceed the applicable LA1 criteria during attended noise monitoring in Q3 2021.

LA1, 1minute GENERATED BY MCC AGAINST OPERATIONAL NIGHT NOISE CRITERIA – APRIL TO JUNE 2021.

Table 4 - July Noise Monitoring – Night

Location	Start Date and Time	Wind Speed m/s	Rainfall mm	Criterion dB	Criterion Applies ¹	MCCP LA1,1min dB ²	Exceedance dB ³
NM1	19/07/2021 22:30	0.2	0.0	45	Yes	29	Nil
NM2	19/07/2021 23:30	0.2	0.0	45	Yes	1A	Nil
NM3	19/07/2021 22:00	0.1	0.0	45	Yes	1A	Nil
NM4	19/07/2021 23:00	0.2	0.0	45	Yes	1A	Nil
NM5	19/07/2021 22:00	0.1	0.0	45	Yes	27	Nil
NM6	20/07/2021 00:00	0.4	0.0	45	Yes	1A	Nil

Table 4 - August Noise Monitoring – Night

Location	Start Date and Time	Wind Speed m/s	Rainfall mm	Criterion dB	Criterion Applies ¹	MCCP LA1,1min dB ²	Exceedance dB ³
NM1	03/08/2021 22:30	0.1	0.0	45	Yes	30	Nil
NM2	03/08/2021 23:30	2.1	0.0	45	Yes	1A	Nil
NM3	03/08/2021 23:45	2.8	0.0	45	Yes	1A	Nil
NM4	03/08/2021 23:00	0.2	0.0	45	Yes	1A	Nil
NM5	03/08/2021 22:00	0.2	0.0	45	Yes	30	Nil
NM6	03/08/2021 23:56	2.4	0.0	45	Yes	1A	Nil

Table 5 – September Noise Monitoring – Night

Location	Start Date and Time	Wind Speed m/s	Rainfall mm	Criterion dB	Criterion Applies ¹	MCCP LA1,1min dB ²	Exceedance dB ³
NM1	08/09/2021 22:30	0.2	0.0	45	Yes	1A	Nil
NM2	08/09/2021 23:30	0.7	0.0	45	Yes	1A	Nil
NM3	08/09/2021 23:39	0.4	0.0	45	Yes	1A	Nil
NM4	08/09/2021 23:00	0.2	0.0	45	Yes	1A	Nil
NM5	08/09/2021 22:00	0.5	0.0	45	Yes	1A	Nil
NM6	08/09/2021 23:57	0.5	0.0	45	Yes	1A	Nil

Notes:

- Noise emission limits do not apply during periods of rainfall or wind speeds greater than 3 metres per second (at 10 metres);
 - Estimated or measured LAeq,15minute attributed to MCCM;
 - Estimated or measured LA1,1minute attributed to MCCM;
 - NA in exceedance column means atmospheric conditions outside those specified in Project Approval and criterion is not applicable.
- 1A – Inaudible NM – Not measurable

Wind Direction during Attended Monitoring

Wind direction data is collected from the MCCM Automated Weather Station (AWS). Wind data for the duration of the attended monitoring assessment, recorded at the MCCM AWS is presented in the table below.

Table 7 - Prevailing Wind Direction

Monitoring Date	Prevailing Wind Direction
July	W
August	W
September	WSW

Blast Monitoring

There were 28 blasts at MCCM during Q3 2021. All blast monitoring results recorded within the reporting period have complied with applicable overpressure and ground vibration limits specified in the respective approvals.

Table 8 - Blast Results Summary Quarter 3 2021

Parameter	Units	Frequency	Number	Average	Max	100% Limit	Exceedance (Yes / No)
Noise	dB (Lin Peak)	All	28	96.23	111.4	120	No
Vibration	mm/s		28	0.22	2.78	10	No

Air Quality

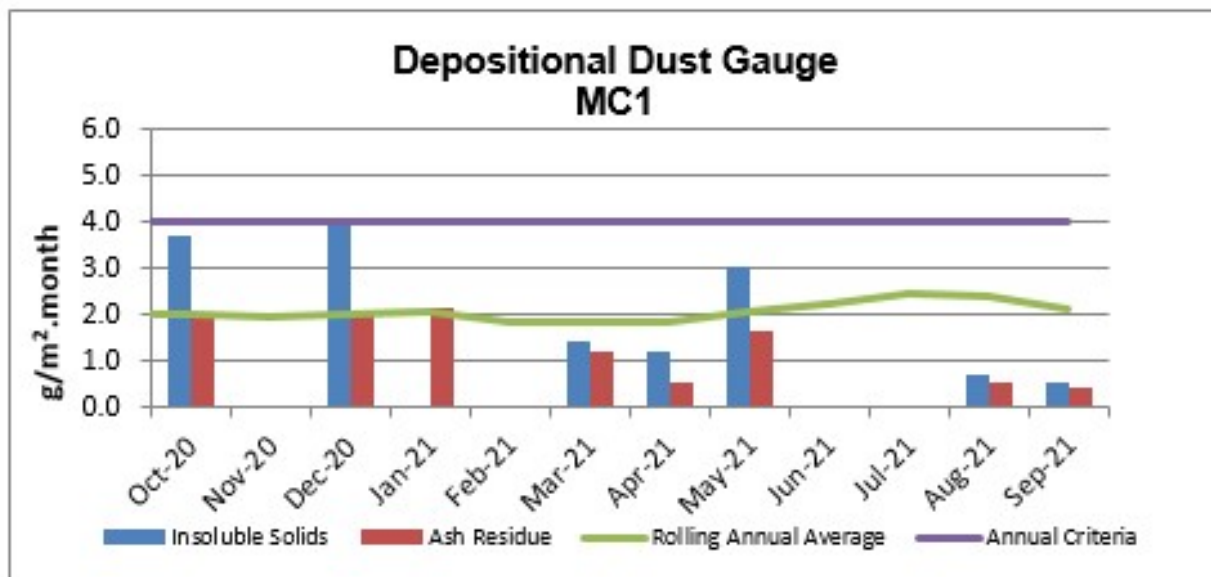
Total Depositional Dust

The 12 monthly rolling annual average remains below the relevant Project Approval criteria of $4\text{g/m}^2/\text{month}$ for the respective monitoring points.

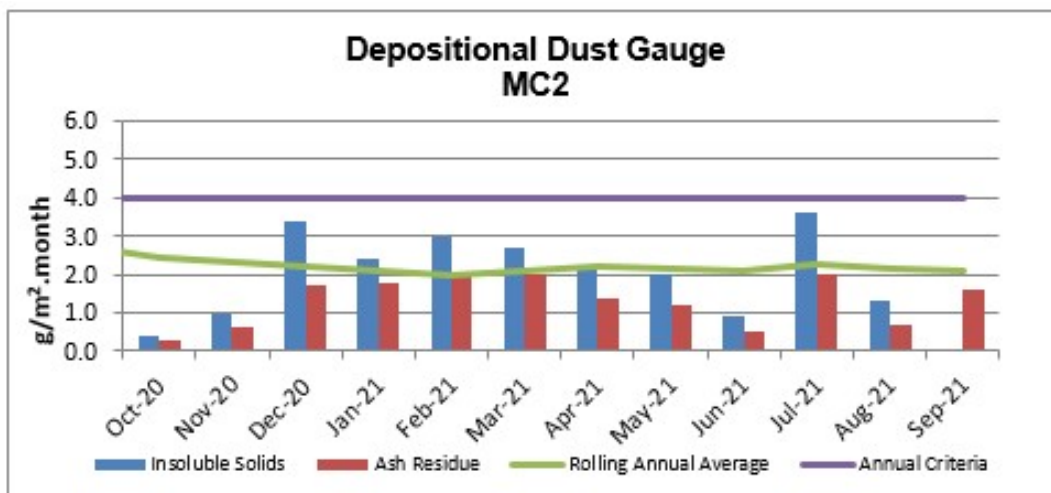
Table 9 – Deposited Dust Gauge Results [$\text{g/m}^2/\text{month}$]

MONTH	MC1	MC2	MC3	MC4
July-21	4.1c	3.6	0.7	3.8
August-21	0.7	1.3	0.3	2.6
September-21	0.5	6.2c	1.4	0.3
12 MONTH ROLLING AVERAGE	2.1	2.1	1.8	1.2

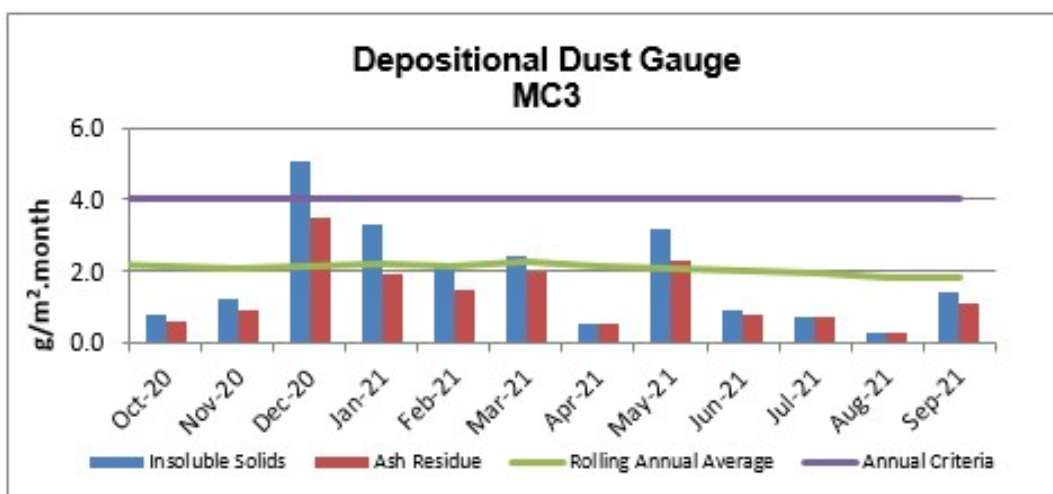
^c samples contaminated by bird dropping, decomposed insects or vegetable matter.



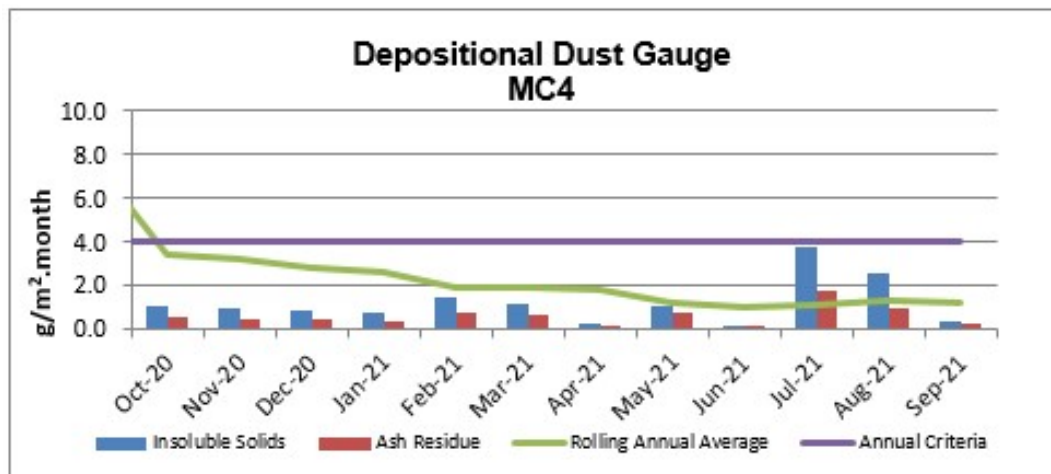
* Blank cells indicate sample periods where the sample has been contaminated and excluded from the results tables due to contaminated material (insect larvae, bird droppings, vegetation etc.).



* Blank cells indicate sample periods where the sample has been contaminated and excluded from the results tables due to contaminated material (insect larvae, bird droppings, vegetation etc.).



* Blank cells indicate sample periods where the sample has been contaminated and excluded from the results tables due to contaminated material (insect larvae, bird droppings, vegetation etc.).

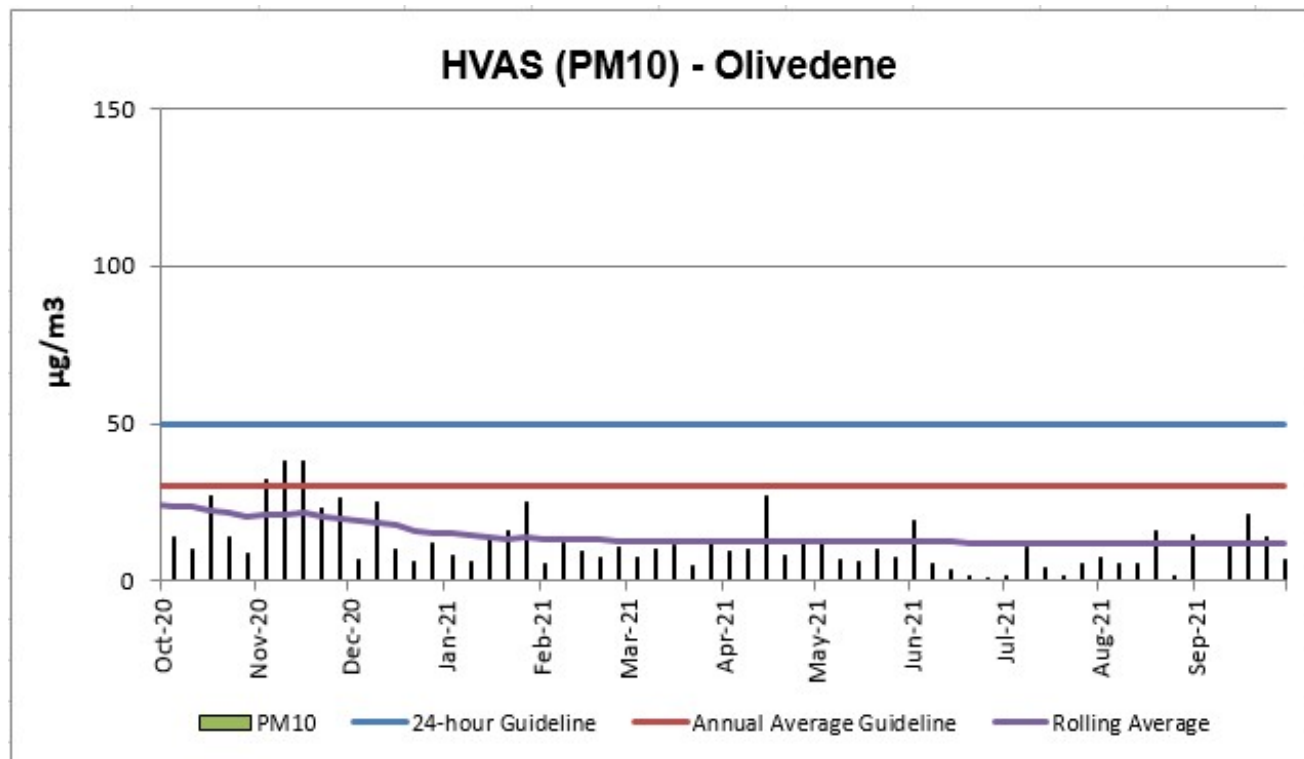


* Blank cells indicate sample periods where the sample has been contaminated and excluded from the results tables due to contaminated material (insect larvae, bird droppings, vegetation etc.).

High Volume Air Sampling (HVAS)

The HVAS monitor is located on the property 'Olivedene,' a mine owned property on Therribri Road. During past 12 months there have been no exceedances of the 24 hour average of 50 $\mu\text{g}/\text{m}^3$.

HVAS PM₁₀ Rolling Annual Average at the end of Q3 2021 was **11.9 $\mu\text{g}/\text{m}^3$** , which is below the Annual Average Guideline of 30 $\mu\text{g}/\text{m}^3$.



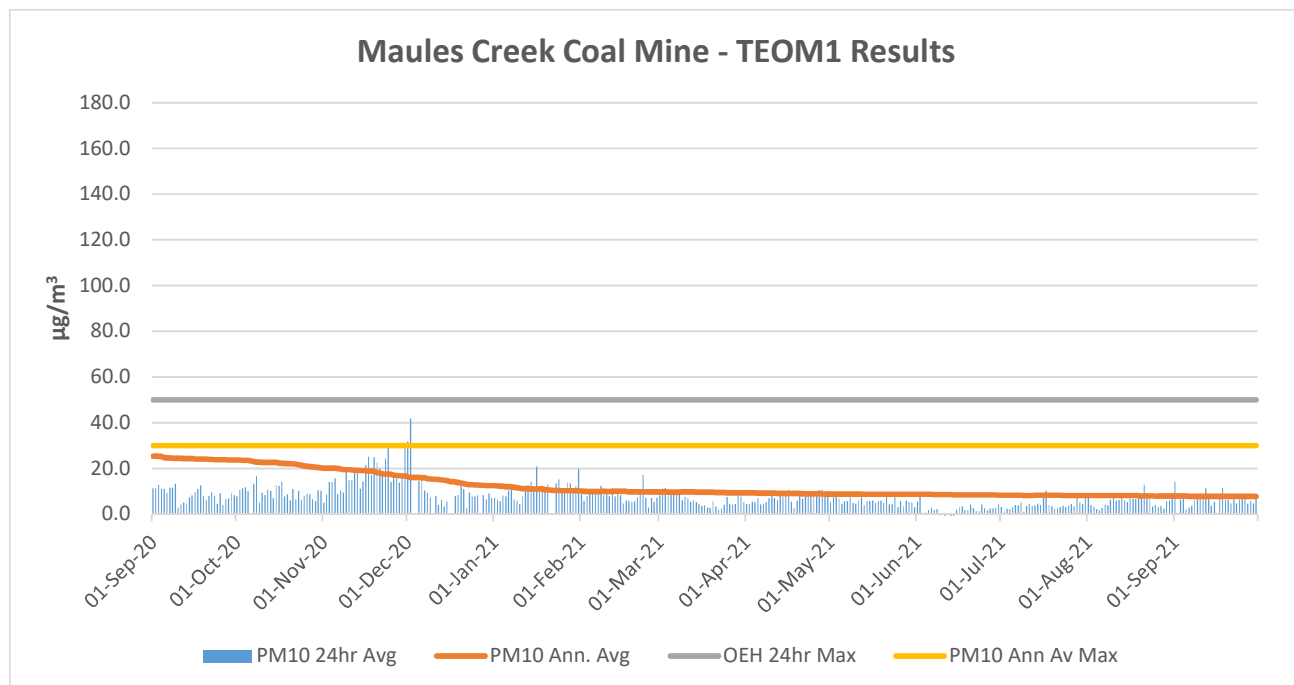
TEOM - PM₁₀ Results

The annual rolling average for PM₁₀ at the Maules Creek Coal TEOM was **7.7 µg/m³**, which is below the Project Approval annual average criteria of 30µg/m³ as shown in the following figure. There have been no exceedances of the 24 hour average for Q3.

TEOM Result Figures – Particulate Matter PM₁₀µg/m³

* Blank columns indicate sample periods where there was either power outage, maintenance or other related causes.

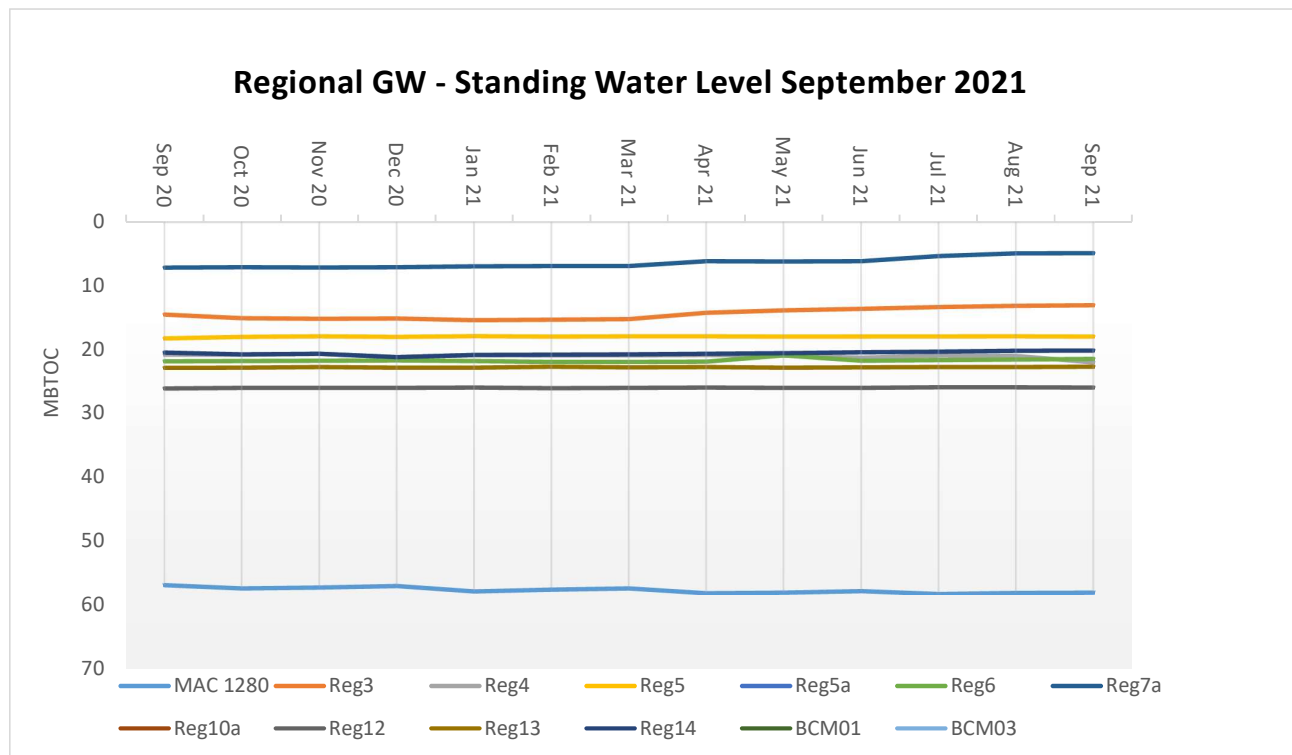
** Exceedances of the OEHL 24hr Maximum over the past 12 months have been non mine related and have been attributed to regional dust events. All previous exceedances have been discussed at CCC meetings.



Water Monitoring

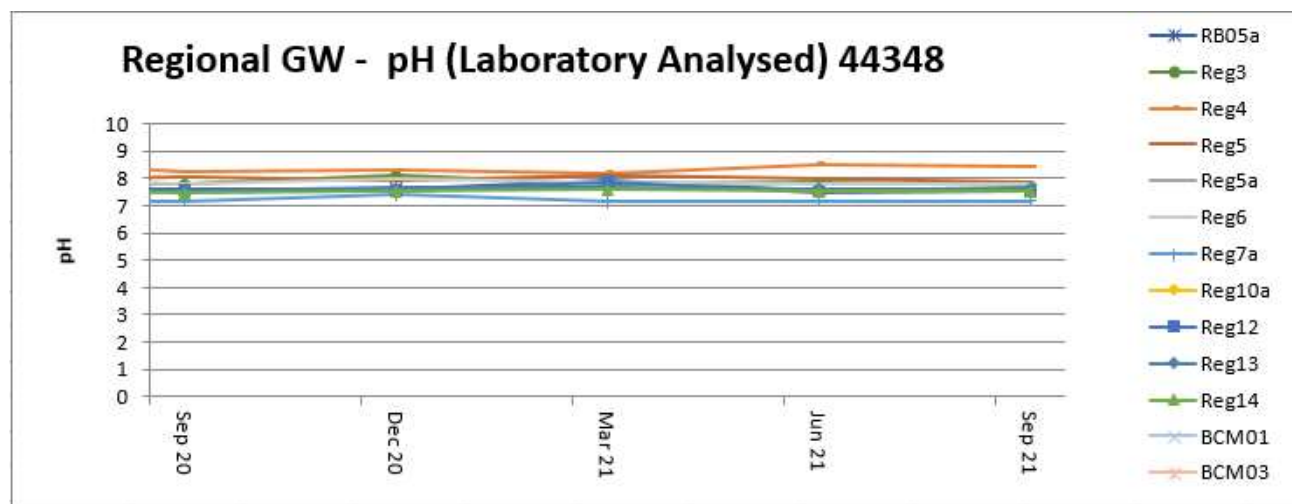
Groundwater

Groundwater monitoring results in open standpipe piezometers show levels to be relatively stable. The Regional bores were installed between Q4, 2013 and Q1, 2014. BCM01, BCM03, Reg10 are shallow bores which have remained dry since construction in 2013.



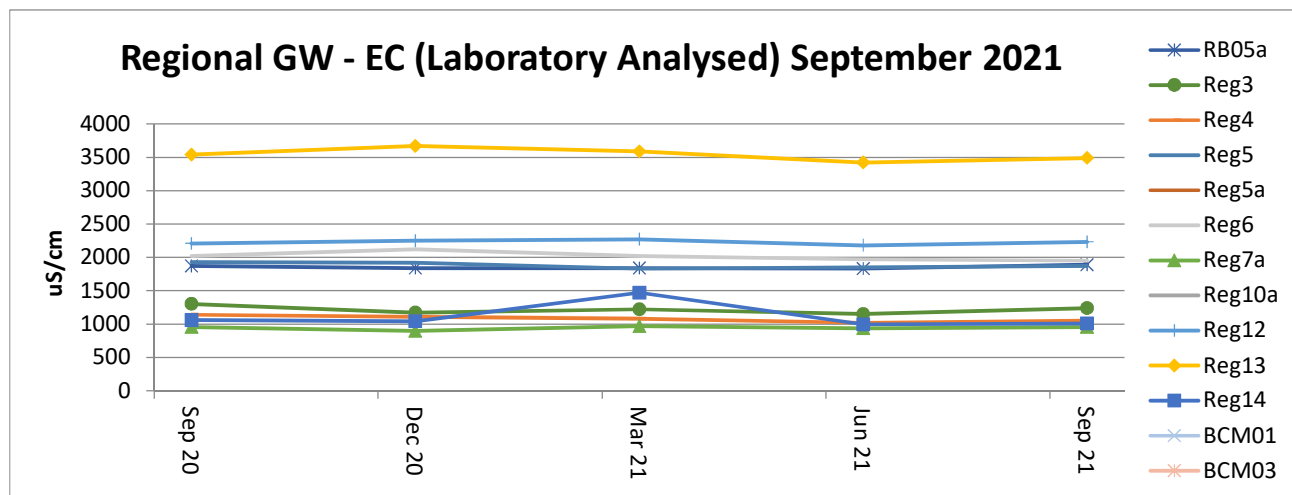
Acidity / Alkalinity (pH)

Over the past twelve months pH readings across the regional bores have remained static with very little fluctuation.



Electrical Conductivity

Laboratory Electrical Conductivity (EC) levels are all within historic groundwater EC range of 500 $\mu\text{S}/\text{cm}$ to 2,500 $\mu\text{S}/\text{cm}$, with the exception of monitoring bore Reg13 which has a historic groundwater EC range of 2,500 $\mu\text{S}/\text{cm}$ to 4,100 $\mu\text{S}/\text{cm}$. Within the last twelve months EC has remained static.

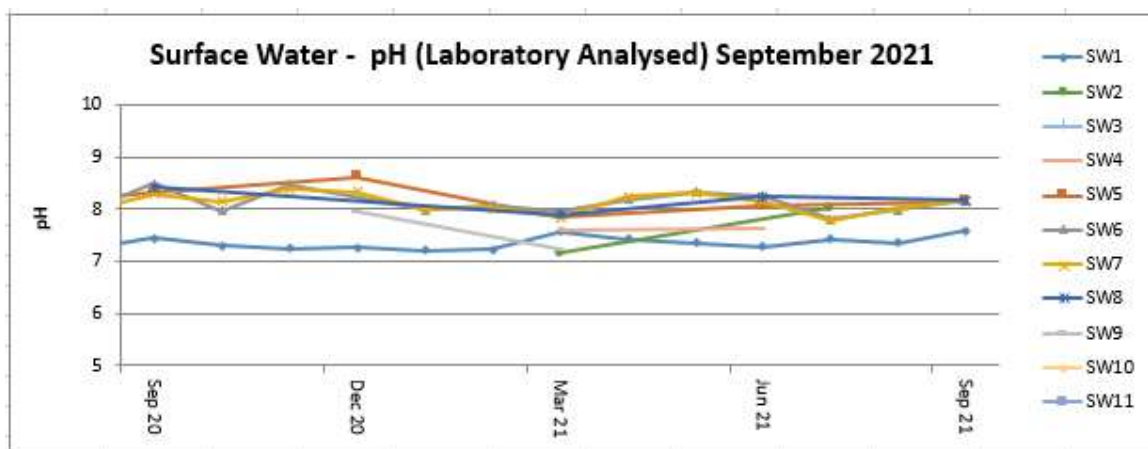


Surface Water – Creeks and Rivers

Routine surface water monitoring is conducted in surrounding creeks and rivers on a monthly basis. Results for parameters including pH, EC and Total Suspended Solids (TSS) are shown in the figures below. There are eleven surface water monitoring points, of which **five** were able to be sampled during Q3 2021.

Acidity / Alkalinity (pH)

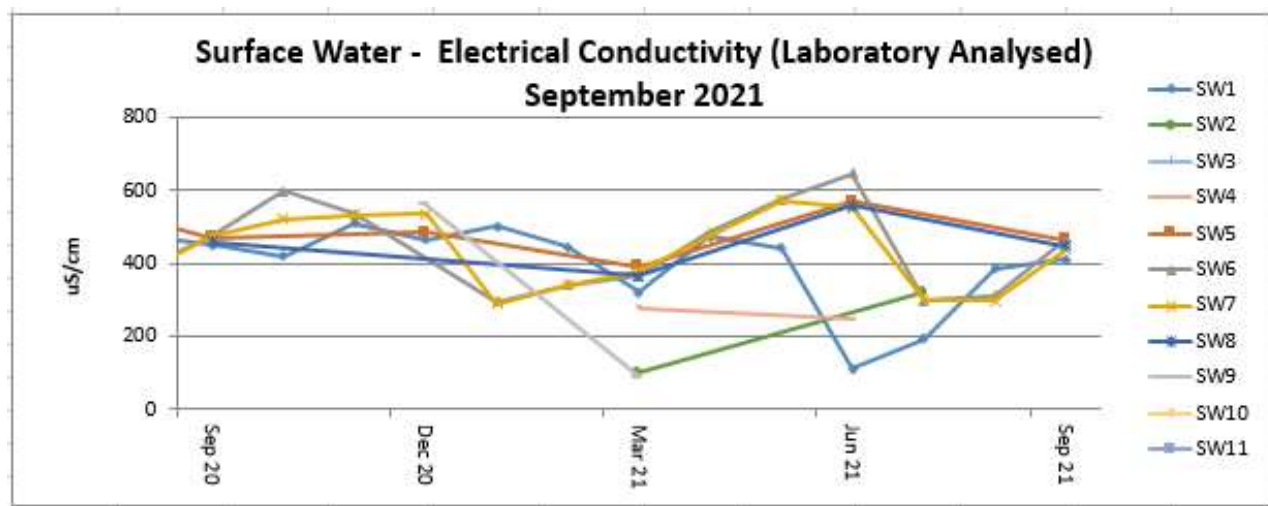
Monitoring results for pH in creeks and rivers surrounding MCCM are all trending within the ANZECC range for Irrigation, Ecosystem Health and Recreation.



*0 values indicate no water to sample due to the creek being dry

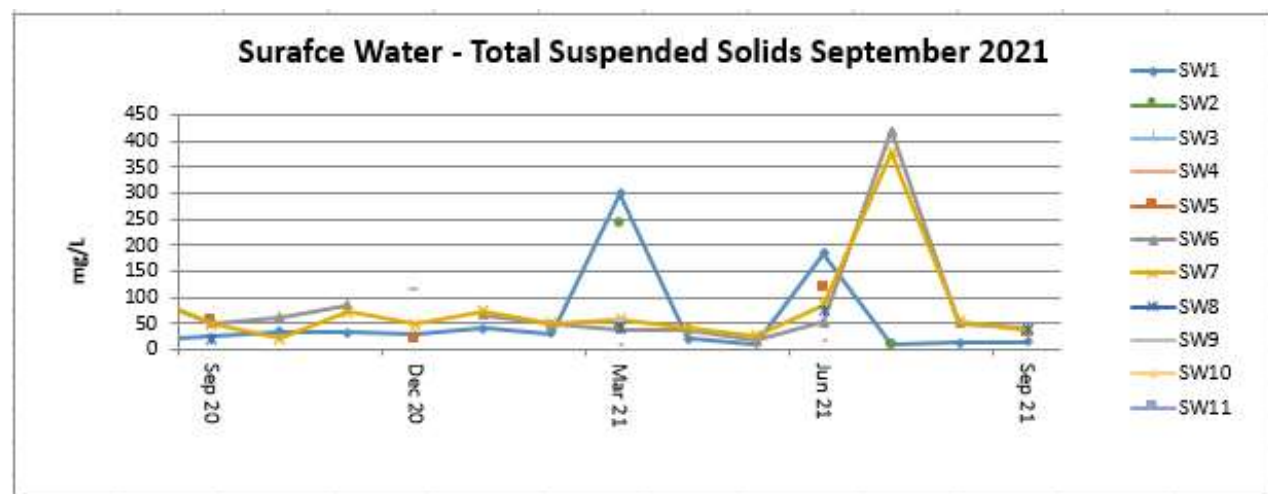
Electrical Conductivity

Surface water EC trends have remained consistent with SW5, SW6, SW7 and SW8 all historically variable. SW5, SW6, SW7 and SW8 are points along the Namoi River which are subject to regulated and variable flow regimes.



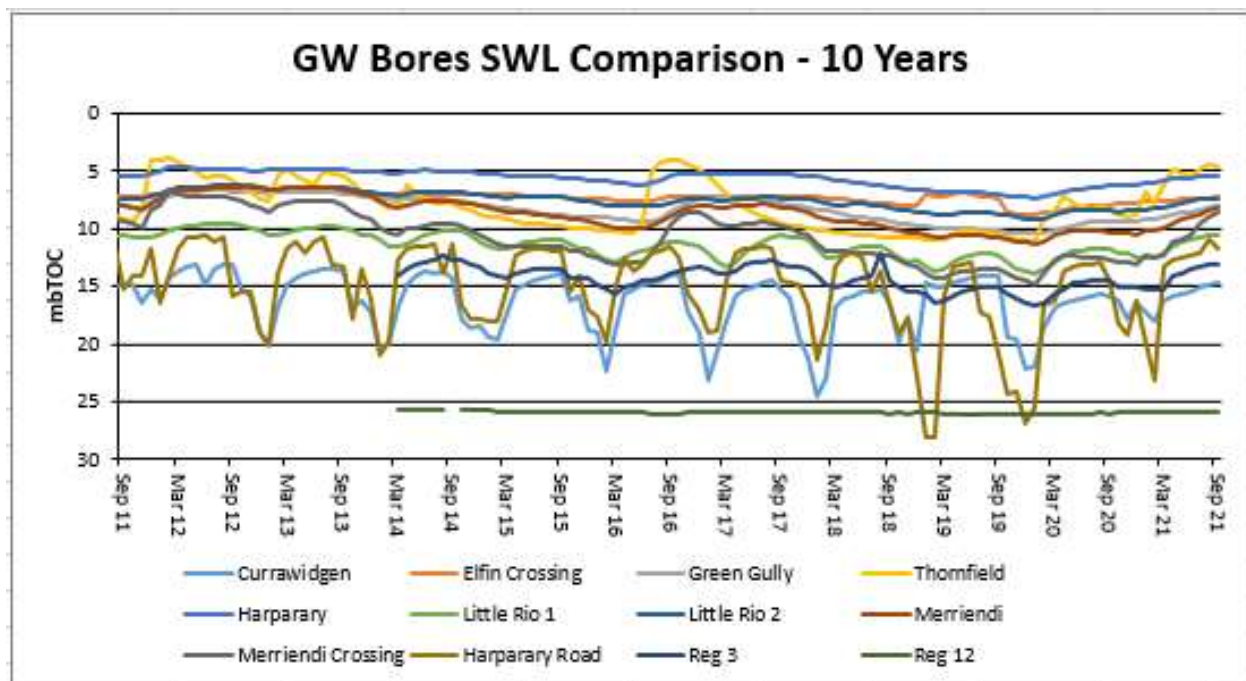
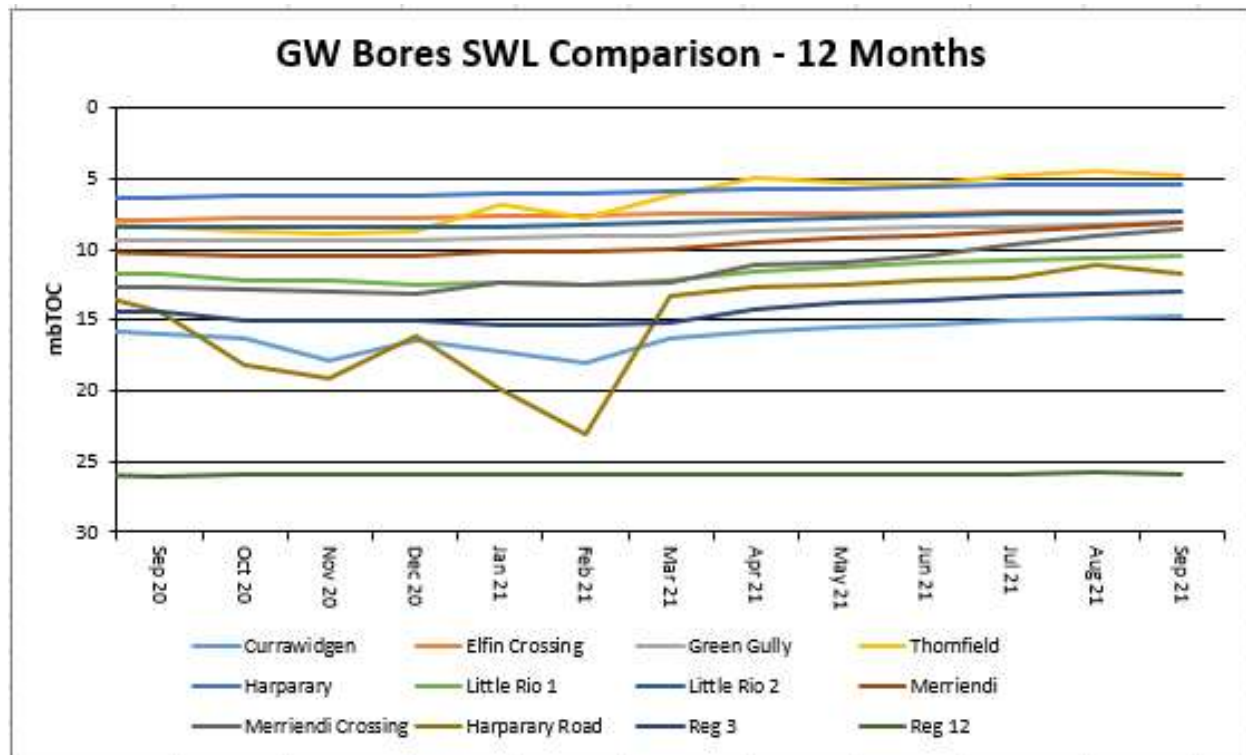
Total Suspended Solids (TSS)

Surface water TSS trends have remained generally consistent with historical results. SW5, SW6, SW7 and SW8 are historically variable as they are located along the Namoi River which is subject to regulated and variable flow regimes. There were elevated levels of TSS in Q3 due to significant rainfall events.



Regional Groundwater monitoring

Maules Creek Coal Mine monitors regional bores across the region.



Rehabilitation

Progressive rehabilitation works are ongoing. 70,000 trees have been planted in the rehabilitation areas over the previous quarter.

Feral Animal Management

Feral Animal control program in the Whitehaven Offset Areas is ongoing (September 2021)

Weed Control

- Targeted seasonal weed control for Patterson Curse and other broadleaf Weeds

Threatened Flora

- Quarterly inspections of Threatened species is ongoing
- Maintenance of Threatened Flora Site fences

Fire Management

- Currently planning 2021 Autumn Ecological Burn Program

Fencing and Waste Management

- Ongoing maintenance of Heritage Site fences

Community Complaints

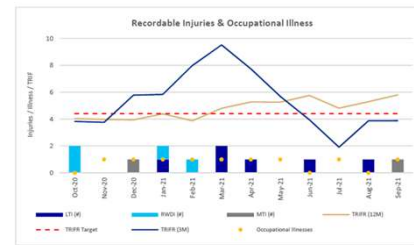
- **Nine** complaints were received during Q3 CY2021.

Date	Method	Category	Nature Of Complaint	MCCM Response
5/7/2021	Text	Noise	Complaint received from Landholder regarding noise from the mining operations.	MCCM reviewed monitoring data and operational activities and provided a response to the Complainant.
6/7/2021	Email	Blast	Complaint received via the EPA in relation to a blast.	MCCM reviewed monitoring data and footage of the blast and provided all data to the EPA
10/7/2021	Text	Noise	Complaint received from Landholder regarding noise from the mining operations	MCCM reviewed monitoring data and operational activities and provided a response to the Complainant.
11/7/2021	Text	Driving	Complaint received from Landholder regarding Contractor driving behaviour in surrounding area.	MCCM discussed with Contractor and provided a response to the Complainant.
19/7/2021	Email	Blast	Complaint received from Local resident relating to vibration following a blast at MCCM.	MCC reviewed the monitoring data from a location in close proximity to complainant, this indicated compliance with blasting conditions. This information was provided to the resident.
29/7/2021	Email	Blast	Complaint received from Local resident relating to vibration following a blast at MCCM.	MCC reviewed the monitoring data from a location in close proximity to complainant, this indicated compliance with blasting conditions. This information was provided to the resident. Information was also provided to the EPA as the complainant had included the EPA in correspondence.
31/07/2021	Email	Blast	Complaint received from Local resident relating to vibration following a blast at MCCM.	MCC reviewed the monitoring data from a location in close proximity to complainant, this indicated compliance with blasting conditions. This information was provided to the resident. Information was also provided to the EPA.
20/08/2021	Email	Blast	Complaint received via the EPA in relation to a blast.	MCCM reviewed monitoring data and provided to the EPA.
13/09/2021	Phone	Community	Complaint received regarding inappropriate use of a UHF channel	MCC reviewed the complaint and found the communications were not coming from the MCCM.



Company Report & Overview of Activities

- FY22 target production ~ 12.1 – 12.5Mtpa ROM
- FY 22 Q1 delivered 2.9Mt ROM
- September 2021 TRIFR (Recordable injuries per million exposure hours) 5.8



CCC MEETING

WHITEHAVEN COAL

Health and Safety

COVID-19 Management

- Continued monitoring of compliance with current COVID-19 preventative measures.
- Continued monitoring of NSW Public Health Order and WorkSafe Australia.
- Ensuring our workforce remains informed.
- Business continuation plan in light of COVID Border restrictions.
- COVID Vaccination scheme.

Continuous improvement Projects

- Monitoring progress with Health and Safety Improvement Plan.
 - Improvement of control of vehicle interaction and integration of AHS Projects
- Critical Control Monitoring

CCC MEETING

WHITEHAVEN COAL

Employment

- Continued focus on local, indigenous and female employment with ongoing training programs undertaken.
- 513 MCC people are employed on site.
 - 11.5% of the MCC workforce are women.
 - 15.2% of total workforce are women
 - 12.5% Indigenous employment

Employee Numbers	Production	Maintenance	Staff	CHPP	Total
WHC employees	331	57	69	26	513
Labour Hire	193	32	10	3	238
Total Operations Employees	524	119	79	29	750
WHC employees – Indigenous					75
Labour Hire – Indigenous					19
WHC employees – Female					59
Labour Hire – Female					85

CCC MEETING

WHITEHAVEN COAL

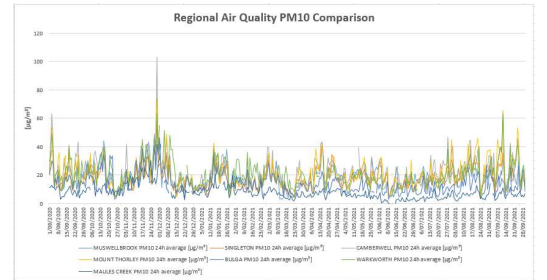
Air quality management

- Publically available results of TEOM1 available on the EPA website. Annual rolling average for TEOM 1 is 7.7 $\mu\text{g}/\text{m}^3$ at 30 September 2021 (criteria 30 $\mu\text{g}/\text{m}^3$).
- Ongoing dust suppressant application across the operation.
- Progressive overburden emplacement and bulk shaping on the northern dump, with top soil spreading and tree planting in progress.
- 30 ha currently reshaped with 15ha of topsoil spread. Areas to be aerial seeded in the coming weeks



CCC MEETING

Air Quality Monitoring September 2020 – September 2021

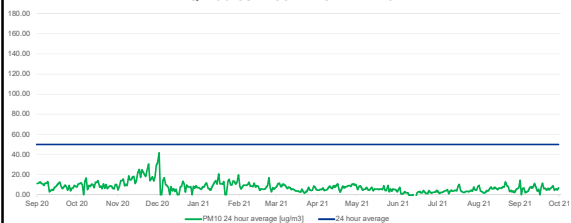


September 20 - September 21	TAMWORTH PM10	MUSWELLBROOK PM10	SINGLETON PM10	CAMDENHILL PM10	MOUNT THORLEY PM10	BULLGA PM10	WARRKENTH PM10	MAULES CREEK PM10
Annual Average	14	19	16	22	20	14	21	8
Max 24h Ave	33	59	55	185	74	47	64	42

CCC MEETING

Air Quality Monitoring 1 September 2020 – October 2021

AQ Maules Creek TEOM1 PM10



Annual rolling average for TEOM 1 is 7.7 $\mu\text{g}/\text{m}^3$ at 30 September 2021 (criteria 30 $\mu\text{g}/\text{m}^3$). There were no exceedances of 50 $\mu\text{g}/\text{m}^3$ during Q3 of 2021.

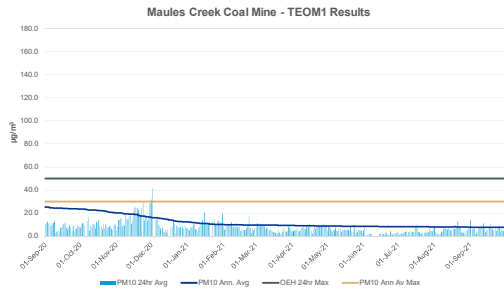
CCC MEETING

Monitoring and Environmental Results

- Monitoring and environmental results provided within the distributed information pack

CCC MEETING

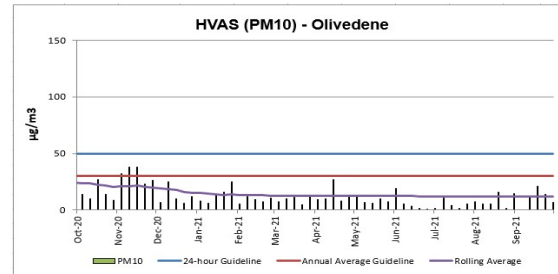
TEOM PM10 Results



CCC MEETING

WHITEHAVEN COAL

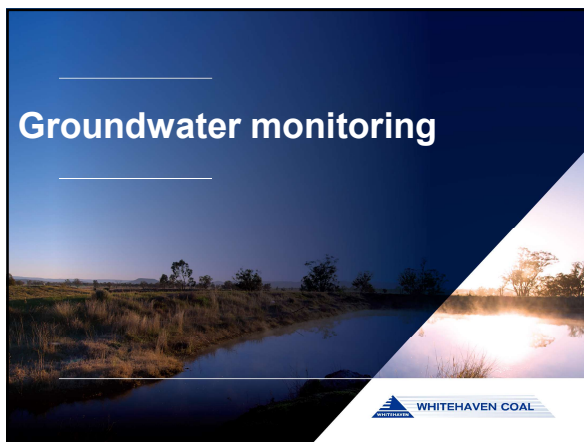
High Volume Air Sampling (HVAS)



CCC MEETING

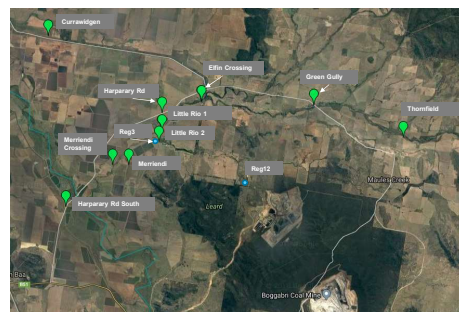
WHITEHAVEN COAL

Groundwater monitoring



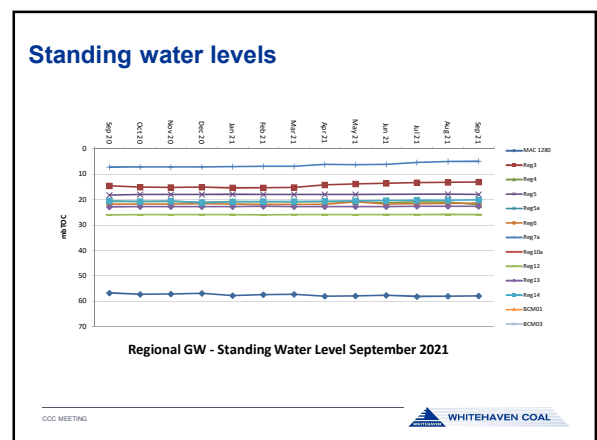
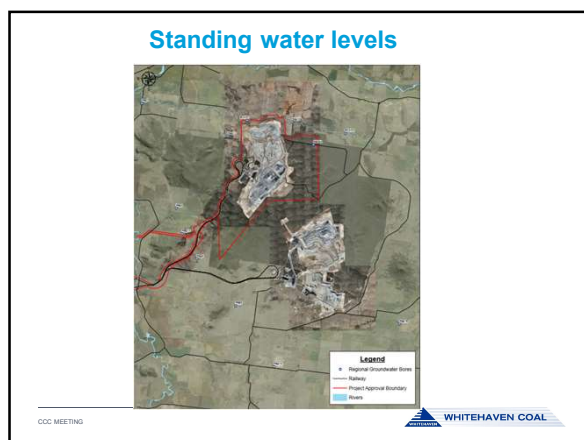
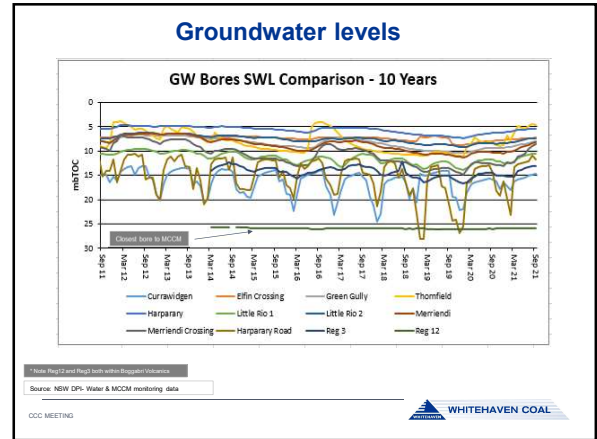
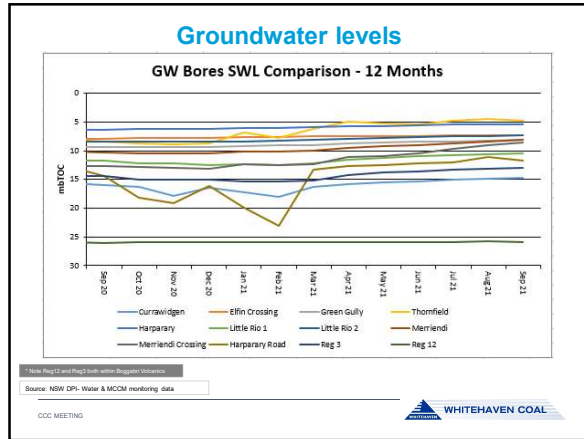
WHITEHAVEN COAL

Monitoring Locations



CCC MEETING

WHITEHAVEN COAL



Biodiversity Management

Feral Animal Management

During the most recent routine Whitehaven Offset Area Feral Animal Control program (October 2021) the results included:

- 67 out of total 89 pigs trapped were from the Maules Offset properties
- 297 out of total 469 baits (1080) taken were from the Maules Offsets properties

Weed Control

- Targeted seasonal control for broadleaf and box thorn weeds;

Revegetation

- Annual Tree Planting Program has concluded.

CCC MEETING



WHITEHAVEN COAL

17 //

Biodiversity Management

Threatened Flora

- Planted an additional 85 Pomaderis seedlings in August/September;
- Total of 119 Pomaderis been planted at 5 sites in the Maules Offset from seed collected from the Mine Site



WHITEHAVEN COAL

18 //

Biodiversity Management

Upcoming works:

- Quarterly Pest Animal Monitoring and Control Program in December 2021.
- Continued seasonal Weed Control Programs.
- Complete Spring Flora Monitoring.
- Complete Annual Fauna Monitoring.
- Quarterly Threatened Flora Inspections and Programs.
- Complete Annual Fuel Load Monitoring and Bushfire Hazard Assessment.
- Complete Annual Soil Management and Track Structure Inspections.
- Complete Derelict Infrastructure Clean Up and Removal.

WHITEHAVEN COAL

19 //

Community

Feedback and Complaints for all Whitehaven sites can be made to:

[1800 WHAVEN \(1800 942836\)](tel:1800942836)

Each Whitehaven site has a site specific feedback email address. Maules Creek email address is: MaulesCreekCoal@whitehavencoal.com.au

Complaints details:

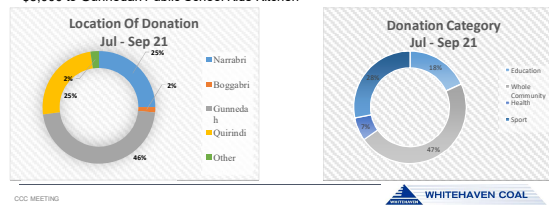
MAULES CREEK COAL MINE 2021 Community Complaints Register				
Date received	Method	Category	Nature of Complaint	MCCMR Response
11/01/2021	Tell	Driving	Complaint received from Landholder regarding Contractor driving behaviour in surrounding area	MCCMR discussed with Contractor and provided a response to the complainant
18/01/2021	Email	BMH	Complaint received from local resident relating to vibration following blast at MCCMR	MCCMR received the monitoring data from a location in close proximity to complainant. This indicated compliance with blasting conditions. This information was provided to the complainant.
28/01/2021	Email	Blast	Complaint received from local resident relating to vibration following a blast at MCCMR	MCCMR received the monitoring data from a location in close proximity to complainant. This indicated compliance with blasting conditions. This information was provided to the complainant.
01/01/2021	Email	Blast	Complaint received from local resident relating to vibration following a blast at MCCMR	MCCMR received the monitoring data from a location in close proximity to complainant. This indicated compliance with blasting conditions. This information was provided to the complainant.
28/06/2021	Email	BMH	Complaint received via the BMH on relation to a blast	MCCMR received monitoring data and provided to the BMH.
13/06/2021	Phone Call	Community	Complaint received regarding inappropriate use of a UHF channel	MCCMR received the complaint and found the communications were not coming from the MCCMR.

CCC MEETING

WHITEHAVEN COAL

Community

- Whitehaven continues to support the local Community with donations and sponsorships.
- More information on Sponsorships and Donations can be found at:
<https://whitehavencoal.com.au/sustainability/community/donations-sponsorships/>
- Donations for July – Sept 2021 over \$93,000. Highlights - over \$9,000 to Carroll Community Bus Association, \$5,000 to Royal Far West Children's Health, and \$5,000 to Gunnedah Public School Kids Kitchen



AHS Project Works

The AHS System has returned to operation after the major software release –R2. There have been several teething issues with the new hardware and software and the system has shown potential. Maules creek have been able to successfully operate the Autonomous trucks for more hours per day than their manned counterparts, however, achieving the equivalent productivity (tonnes or BCM/hr moved) compared to a manned truck is proving to be a challenge.

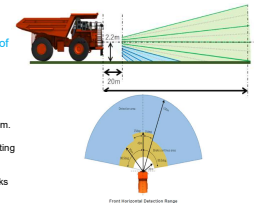
Upcoming features to unlock better ability/productivity of the trucks

Changes to the obstacle detection logic

Autonomous haul trucks are currently slowing down and stopping on the haul roads too frequently. One of the major contributors to the stoppages is the obstacle detection system.

The system uses Millimeter wave radar and Lidars for detecting obstacles

The current system tuning is too sensitive, stopping the trucks for travelable surfaces. New obstacle detection logic is anticipated late November to assist in this area.



WHITEHAVEN COAL

Maules Creek Coal Mine Approvals Update

WHITEHAVEN COAL

Modification 8 – Tyre / Mobile Crushing

- The Modification was placed on public exhibition from the 8-21st October 2021.
- A total of 20 submissions were received on the Modification, comprising three (3) from public authorities, four (4) from organisations, and thirteen (13) from the public.
- A key recommendation in the submissions from public authorities (and some organisations) is to impose conditions that require Whitehaven to regularly review local feasible recycling opportunities that may avoid the need to dispose waste heavy vehicle tyres on-site.
- A Submissions Report responding to submissions received during and after the Modification Report exhibition period was provided to DPIE on the 29th October 2021.
- A determination on the Modification 8 application from DPIE is expected in November 2021.

WHITEHAVEN COAL

Modification 9 – BOS and ETL

The Modification would comprise the following:

- modification of the MCCM biodiversity offset strategy to align the offset areas required under PA 10_0138 with the offset areas proposed to meet the requirements of the EPBC Act approval (EPBC 2010/5566); and
- construction of an ETL (including poles and overhead wires) within a 20 metre (m) corridor to connect the Roma Bore pump to an existing 11 kilovolt (kV) powerline which runs approximately 700 m to the west of the Roma.
- No changes to the coal mining and processing rate, mining method, mine life or rail movements are proposed as part of the Modification.
- It is anticipated that the Modification application and Modification Report will be lodged in 2021 and subsequently placed on public exhibition for comment.



Maules Creek CCC briefing - Water



Enforceable Undertaking update

- Consultation with relevant regulators about the updated WMP
- Development of updated stream health monitoring program complete
- Site allocation for new stream and soil moisture monitoring stations complete
- Construction of the 4 highwall dams is on track
- Decommissioning plans for dams along the rail corridor is complete – requires approval before work can commence

Construction of High Wall Dam 10



Thank you

www.whitehavencoal.com.au



Briefing Note

To: Maules Creek Coal Mine CCC Members

From: Maules Creek Coal Mine (MCC)

Date: 09 December 2021

Reference: Responses to questions MCC CCC November 2021 Meeting

Subject: Responses to MCC CCC Actions and Questions

Action	Response
Action 3. WHC to add in the link from the Annual Review of property names.	Appropriate link is the Biodiversity Management Plan. https://whitehavencoal.com.au/our-business/our-assets/maules-creek-mine/ Click on Environmental Management Click on Environmental Management Plans, Strategies and Programs Select MCC-Biodiversity Management Plan
Action 5. WHC to provide a slide on VPA at next CCC meeting	Noted
Action 6. How many tyres were buried in 2018 and how many tonnes?	229 tyres were buried in 2018.
Action 7. EB to report back on when the pipes were removed	The infrastructure was removed from the Marlow Downs property in September 2021.
Action 8. WHC to report what land is owned by Red Chief.	MCC to provide a map at the next CCC.
Appendix 3. Questions from CCC Member	Response
Question 1. Clarifying the issues from Mod 8: Can Whitehaven be asked to provide a map showing land ownership. There is no indication of which land is owned by Red Chief.	See above
Question 2. Please outline specific details of MCC's 'Proactive Noise Management System' as specified in relation to Mod. 8 - to assure the local community that there will not be any increase in noise from the existing noise limits as stated in the Project Approval, if the Mod 8 is approved.	MCC's 'proactive noise management systems' are outlined through the approved MCC Noise Management Plan https://whitehavencoal.com.au/our-business/our-assets/maules-creek-mine/ Click on Environmental Management Click on Environmental Management Plans, Strategies and Programs Select MCC-Noise Management Plan

Briefing Note

<p>Question 3.</p> <p>Has MCC given EPA all recorded co-ordinates (easting, northing and elevation) of each disposal location of the illegally buried 229 tyres in 2018, along with all individual Tyre make, size and identification of those tyres?</p>	<p>MCC has provided the EPA with all information requested.</p>
<p>Question 4.</p> <p>Where is the onsite Environmental Impact Assessment for the Burial of ORT at MCCM? Not reports relied upon from other sources, but specific MCCM burial sites that could impact groundwater or rehabilitation.</p>	<p>All supporting documentation as required for Modification 8 was submitted to the DPIE in the Modification report.</p>
<p>Letter from Maules Creek Branch of the Country Women's Association of NSW</p>	<p>We note the letter has not been signed.</p> <p>Clearing will be undertaken as per the approved Maules Creek Coal Mine Mining Operations Plan.</p>